



**BIKE ROUTES**

- Low Gap Mount Airy Loop
- Mount Airy-Pilot Mountain Loop
- Alternate Loop Routes
- Rockford Connector
- Dobson-Elkin Loop
- Westfield Mount Airy Loop
- Holly Springs-Silam Connector
- State Park Connector

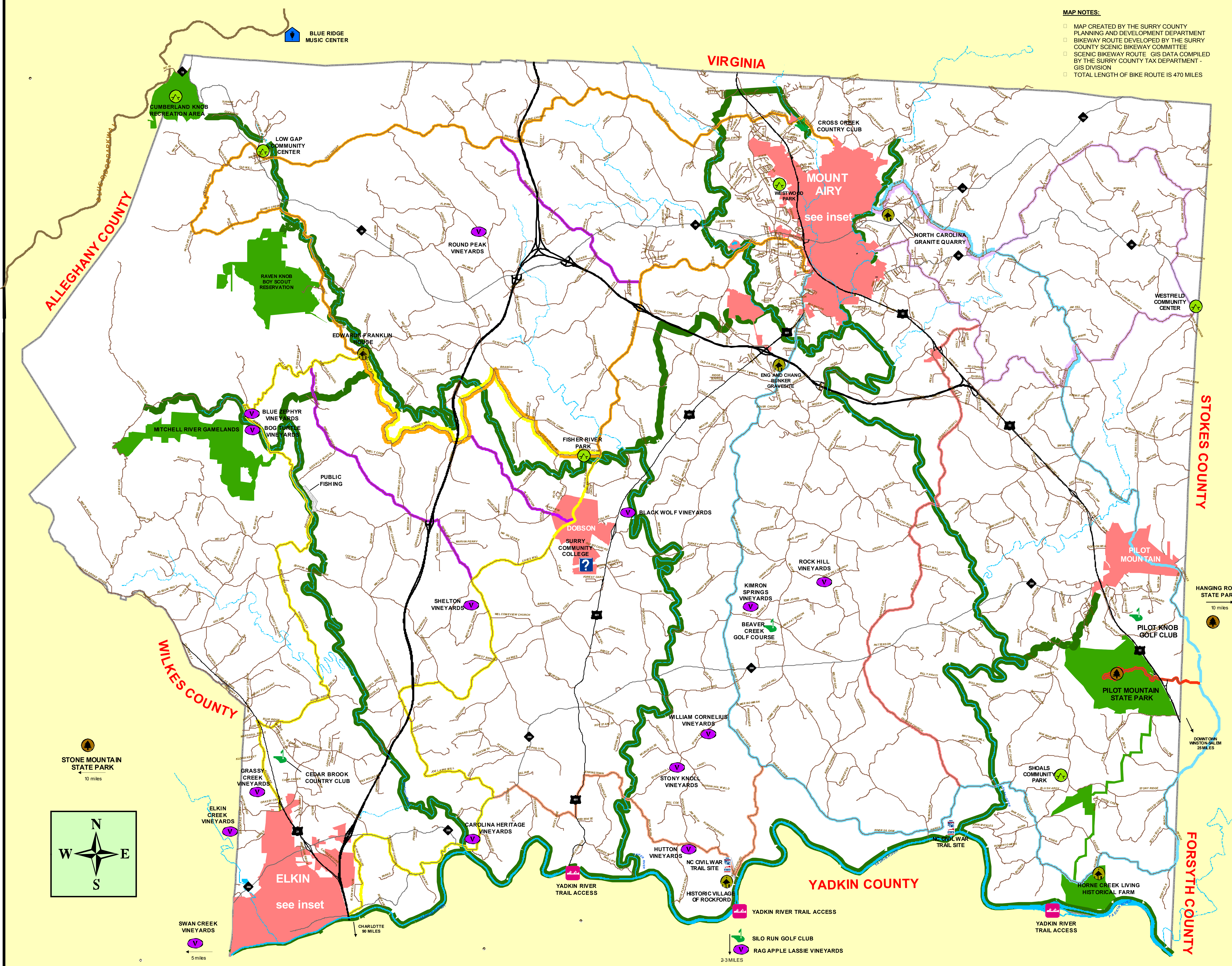
**CULTURAL RESOURCES**

- VINEYARDS AND WINERIES
- STATE PARKS
- HISTORIC SITES
- RECREATION SITES
- RETAIL/TRADE
- INFORMATION CENTERS
- CULTURAL ARTS
- GOLF
- AQUATIC RECREATION
- PROPOSED GREENWAY CORRIDORS

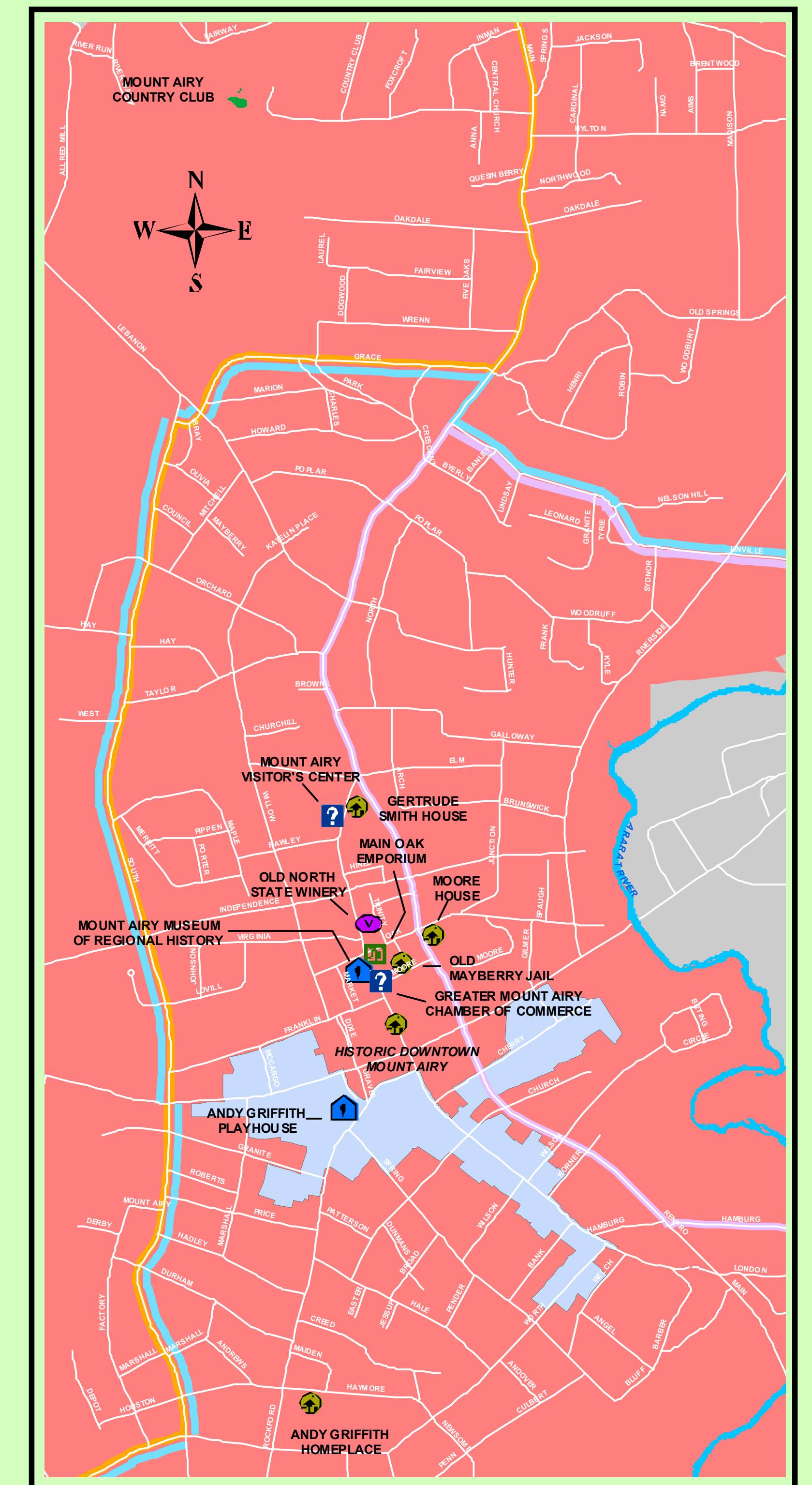
MAY 10, 2007

**MAP NOTES:**

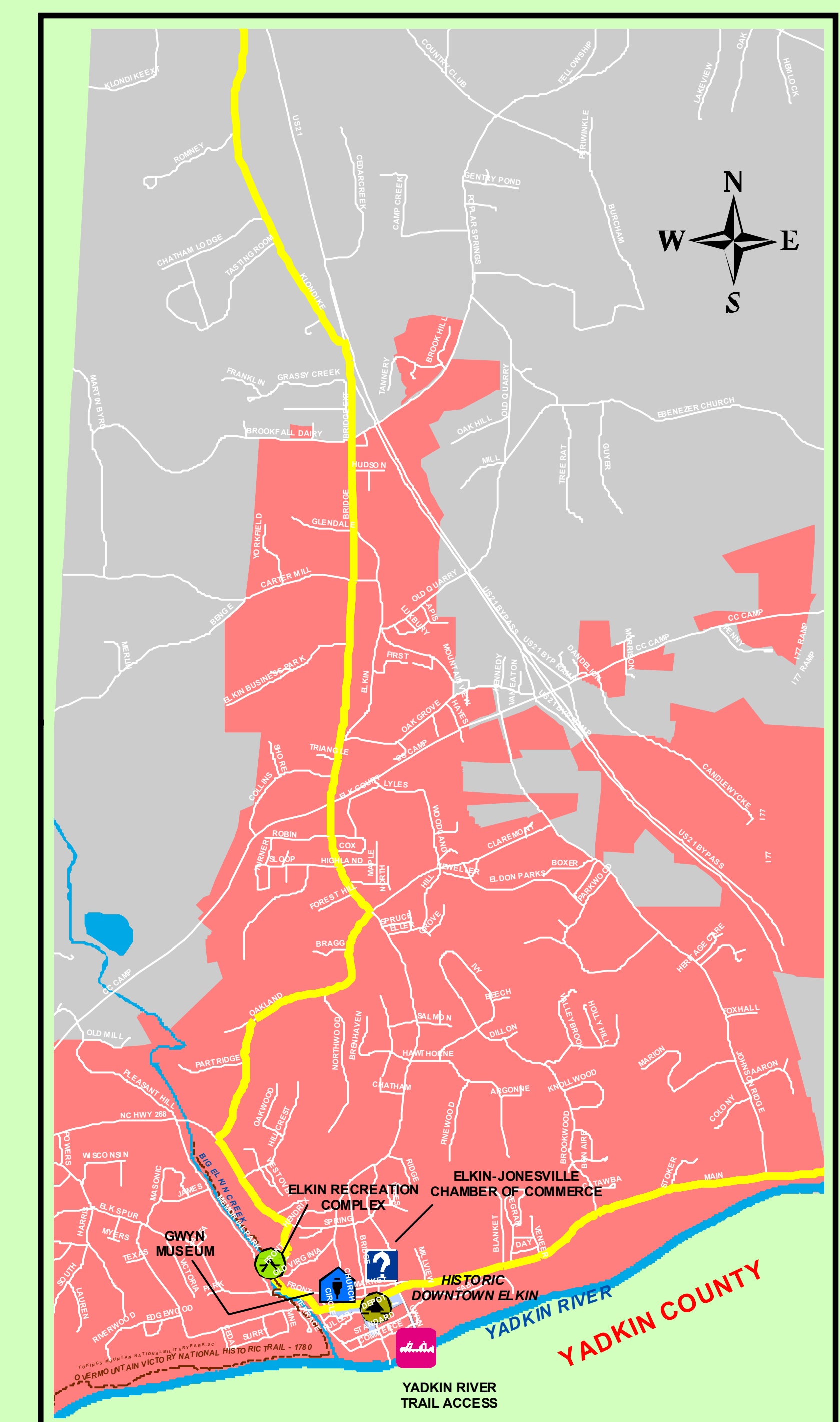
- MAP CREATED BY THE SURRY COUNTY PLANNING AND DEVELOPMENT DEPARTMENT
- BIKEWAY ROUTE DEVELOPED BY THE SURRY COUNTY SCENIC BIKEWAY COMMITTEE
- SCENIC BIKEWAY ROUTE - GIS DATA COMPILED BY THE SURRY COUNTY TAX DEPARTMENT - GIS DIVISION
- TOTAL LENGTH OF BIKE ROUTE IS 470 MILES



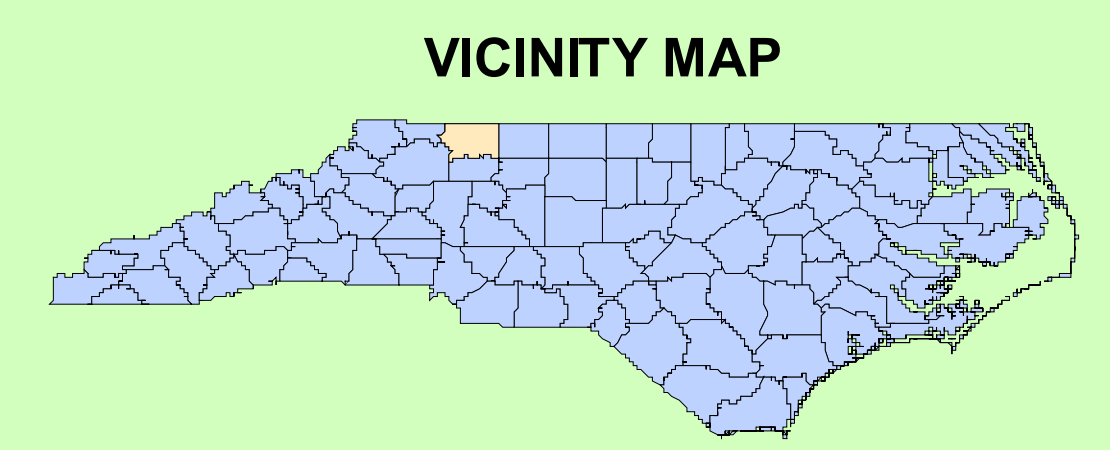
**MOUNT AIRY**



**ELKIN**



**SURRY COUNTY SCENIC BIKEWAY AND CULTURAL RESOURCES**



- PARKING FACILITIES FOR BIKEWAY USERS**
- PILOT MOUNTAIN STATE PARK (OPEN 8:00 AM - 6:00 PM)
  - FISHER RIVER PARK (OPEN 8:00 AM - 6:00 PM)
  - DOBSON MUNICIPAL PARKING
  - MOUNT AIRY MUNICIPAL PARKING
  - WESTWOOD PARK - MOUNT AIRY
  - PILOT MOUNTAIN MUNICIPAL PARKING
  - CUMBERLAND KNOB RECREATION AREA - BLUE RIDGE PARKWAY
  - HISTORIC VILLAGE OF ROCKFORD
  - HORNE CREEK LIVING HISTORICAL FARM (OPEN 8:00 AM - 5:00 PM TUES-SAT)

- DATES OF ADOPTION**
- SURRY COUNTY BOARD OF COMMISSIONERS - JUNE 7, 2004
  - CITY OF MOUNT AIRY BOARD OF COMMISSIONERS - MAY 20, 2004
  - TOWN OF ELKIN BOARD OF COMMISSIONERS - JULY 12, 2004
  - TOWN OF DOBSON BOARD OF COMMISSIONERS - MAY 27, 2004
  - TOWN OF PILOT MOUNTAIN BOARD OF COMMISSIONERS - MAY 24, 2004
  - NORTHWEST Piedmont Rural Planning Organization - NOVEMBER 16, 2004